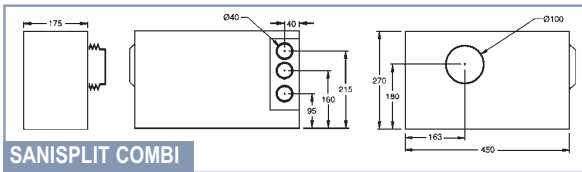
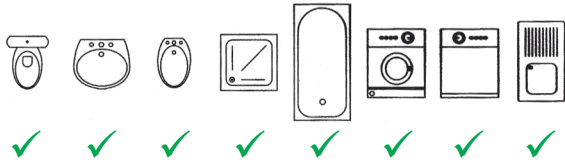


Install a bathroom,  
kitchen or laundry  
virtually anywhere far  
below / away from the  
sewer line without digging  
up the concrete floor



Specifications	Sanisplit	Profisplit
Power Supply	230 V ac	230 V ac
Power	600W	1000W
Electrical absorption	3A	4.5A
Frequency	50 Hz	50 Hz
Protection class	IP 55	IP 55
Max elevation head	11m	11m
Max capacity	350 l/min	350 l/min
Service	Intermittent	Intermittent
Sewage water temperature	<100°C	<100°C
Condenser	10πF/450V	10πF/450V
Electrical cable length	1.2m	1.2m
Pipe discharge size	32mm or 40mm	32mm or 40mm

Sanisplit & Profisplit comply with the following standards:  
EN 12050-2, EN 12050-3, & EN12050-4  
Complies with Australian plumbing standards.

**WARNING!! - Not all pumps are the same**  
Exclusive Patent Split System

	Profisplit / Sanisplit	Competitor A	Competitor B	Competitor C
Motor Size (Watts)	1,000 / 600 Watt	400 Watt	450 Watt	390 Watt
Head Vertical (max)	11.0m	5.0m	6.5m	7.0m
Horizontal Distance (max)	Over 200m	50m on fall	50m on fall	72m on fall
Flow (max)	350 lpm	95 lpm	80 lpm	40 lpm
IP Rating	IP55	IP44	IP44	IP44
Water Temp (max)	100°C	35°C	40°C	35°C
Multi-Purpose	YES	NO	NO	NO
Split System	YES	NO	NO	NO
Internal Plumbing	YES	NO	NO	NO
Dry Motor	YES	NO	NO	NO

Available from Leading  
Plumbing Supply Outlets

Distributed by:



Factory 1, 32 Nicholas Drive  
Dandenong South VIC 3175

Freecall 1800 083 202

Facsimile (03) 9768 3479

[www.pumpfactory.com.au](http://www.pumpfactory.com.au)

# SANISPLIT



**THE STRONGEST  
SPLIT-SYSTEM  
MACERATOR!!**

*11m max Elevation Head  
350 lt/min max capacity*

**THE ONLY MULTI-PURPOSE WASTE  
PUMP WITH SPLIT SYSTEM**



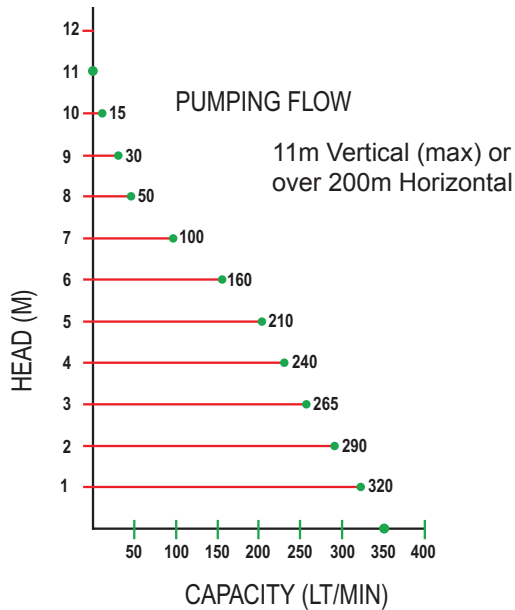


## Features

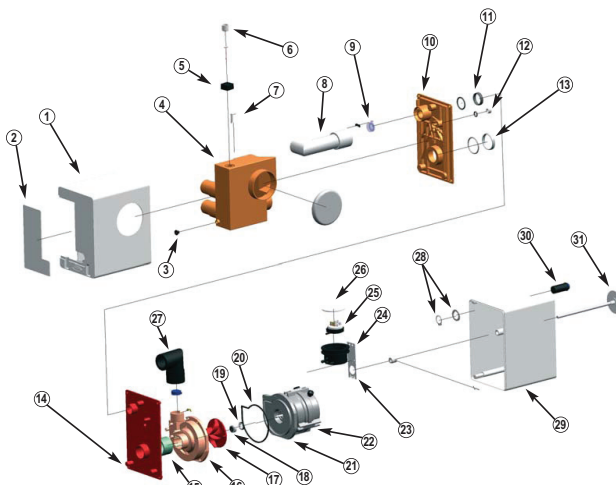
- Motor Power: Powerful 600 / 1000 Watt
- Power Supply: Standard Australian 240 Volt / 50Hz / Single Phase with SAA approved 3 pin plug
- FULLY AUTOMATIC: Macerates waste water automatically pumping it upto the sewer line
- One-way Valve: Built-in prevents the pumped water returning to the unit
- Internal Plumbing Option: Means you don't see ugly discharge pipes
- Multi-Purpose: Macerator and Grey water pump comes complete with blanking caps. Can be used for 1 basin only or complete bathroom with toilet
- Complies with all Australian Plumbing Codes & International Standards EN12050-2, EN12050-3, EN12050-4
- Patent Split System makes maintenance easy and simple without disconnecting pipes, WC, without tools or expensive service technicians
- 100°C Boiling Water without Motor Damage (motor not submersed in liquid)
- Removable Motor Half means easy maintenance & servicing
- Performance 11m Vertical (max), over 200m horizontal (depending on pipe size, etc)

## 10 Reasons why you should buy a Sanisplit

1. Quality Product MADE in ITALY
2. Approved and tested to all Australian Plumbing Codes
3. FREE DELIVERY ANYWHERE IN AUSTRALIA
4. FREE technical advice by QUALIFIED MECHANICAL ENGINEERS
5. Proven and tested product Worldwide
6. STRONGEST SPLIT-SYSTEM MACERATOR TOILET / SINK PUMP! With 600 / 1,000 Watt Motor Macerates with more Torque
7. Patent Split System makes maintenance easy and simple without disconnecting pipes, WC, without tools or expensive service technicians. The built-in one-way valve prevents the pumped water from returning to the unit
8. High Pressure Performance: 11m Vertical (max) or over 200m Horizontal, means you can install in most factories pushing waste high into roofline
9. High Flow Performance: Massive 350 litres per minute flowrate- means you can install multiple fixtures ie toilet, shower, basin at the same time without any problems
10. Multi-Purpose Macerator and Grey water pump! You don't have to be confused with which model to buy!



## SaniSplit Exploded Diagram



- |  |  |
|--|--|
| 1. Tank plastic box                            | 16. Plastic cover with steel cutters                     |
| 2. Lateral door                                | 17. Impeller   |
| 3. Tank rubber cap                             | 18. Rotary seal  |
| 4. Rubber tank                                 | 19. Ceramic seal   |
| 5. Air Passage                                 | 20. Rubber seal between plastic flange and cover         |
| 6. Rubber Tank Inspection Cap                  | 21. Plastic flange                                       |
| 7. Pipe for switch air passage                 | 22. Motor  |
| 8. Discharge rubber pipe                       | 23. Motor box support                                    |
| 9. Outlet one way valve                        | 24. Switch rubber box                                    |
| 10. Connection cap of tank plastic box         | 25. Switch   |
| 11. Discharge pipe seal                        | 26. Cap of switch box                                    |
| 12. Knob nut                                   | 27. Rubber coupling for connection to the discharge pipe |
| 13. Seal for pump connection                   | 28. Manual button support                                |
| 14. Connection cap of pump plastic box         | 29. Pump plastic box                                     |
| 15. Rubber coupling for connection to the pump | 30. Manual start-up button                               |
|  | 31. Knob   |